

HIDDEN CREEK



Crimora, Virginia

HIDDEN CREEK Crimora, Virginia

Hidden Creek, located in Crimora, among wildlife and the Blue Ridge Mountains, is the perfect year-round home or weekend retreat property. Tucked back from the road, this fabulous custom-built log home on 3.8 acres offers privacy and convenience. With extensive landscaping and flagstone walkways, it is a home of quality and attention to detail.

The floorplan is open and inviting, with pinewood floors throughout the house.

As you open the front door, a floor-to-ceiling two-sided stone fireplace with gas logs, vaulted ceilings with recessed lighting, and skylights welcome you.



THE LIVING ROOM

Living is easy centered around the fireplace and open to the kitchen and upstairs loft.



Living Room Dimensions: 16'5" X 15'3"



THE FAMILY ROOM

Charm is throughout the home. The family room with the fireplace is cozy and overlooks the deck and woods at the rear of the house.

Family Room Dimensions: 14'10" x 12'



THE HALF BATH



THE DINING ROOM

The dining room is spacious and open to the family room and the kitchen.

Dining Room Dimensions: 12'5" x 12'



THE KITCHEN

The kitchen with a center island and breakfast bar has pinewood cabinets, a gas range, granite counters, and a ceramic sink, is open to the family room and can be accessed through the mudroom from the garage.



Kitchen Dimensions: 14'10" x 12'



THE PRIMARY SUITE

Tucked aside on the first floor is a spacious primary bedroom suite with a sitting area, walk-in closet, and bath.



Primary Suite Dimensions: 20 x 13'8"



THE LOFT

The home's upper level has a large loft area, two bedrooms, a large bathroom, and a bonus room.



THE UPSTAIRS BATH

The spacious bath has dual vanities, and garden tub.





BEDROOMS SECOND LEVEL

Open airy bedrooms complement the second level.



Extensive decking overlooks the woods; it is easy to imagine entertaining or watching wildlife. Just off the deck is a fenced dog run. There is a custom-built pole barn at the rear of the house with an enclosure that is perfect for working on projects.

THE MUDROOM

The mudroom is accessed from the oversized two car garage or the door to the deck, and leads to the kitchen.



ADDITIONAL INFORMATION

CABLE: Comcast is available

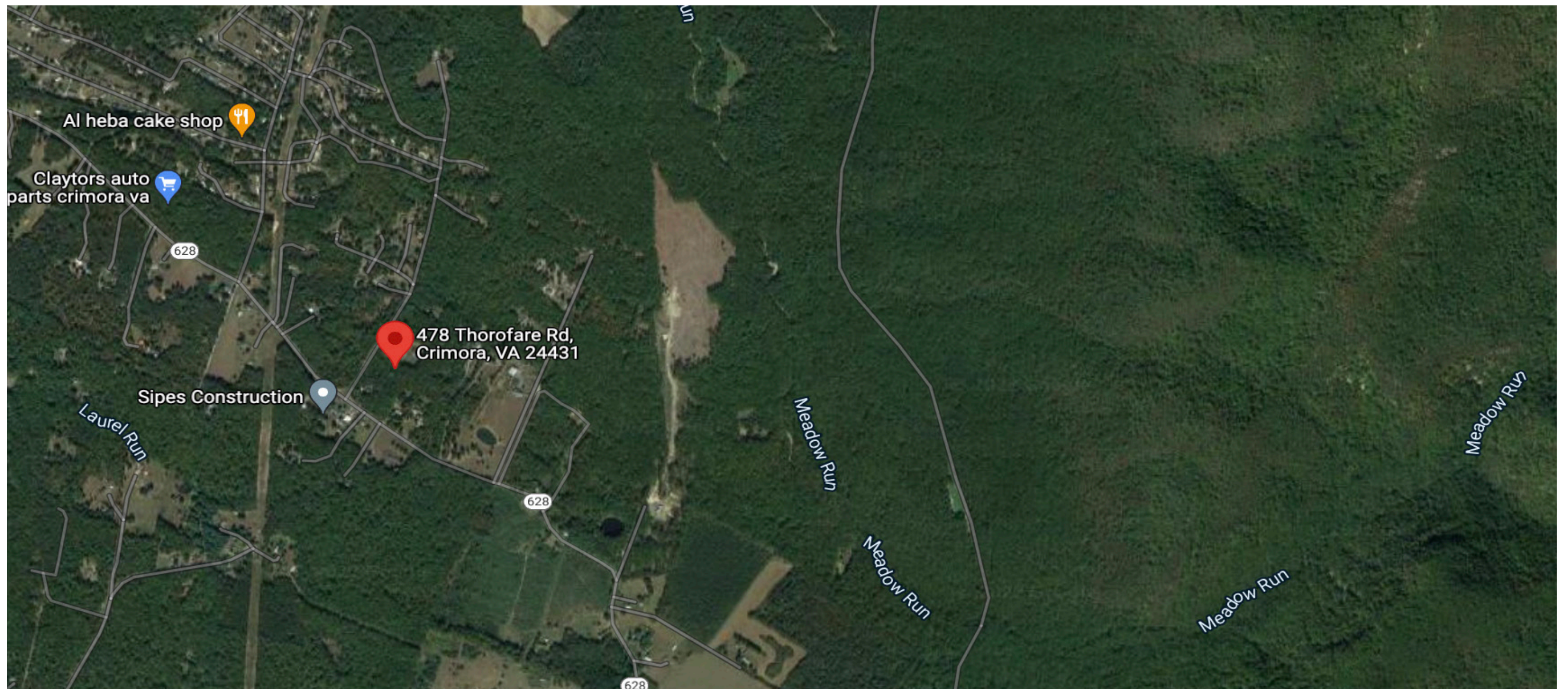
INTERNET: Owners use HughesNet

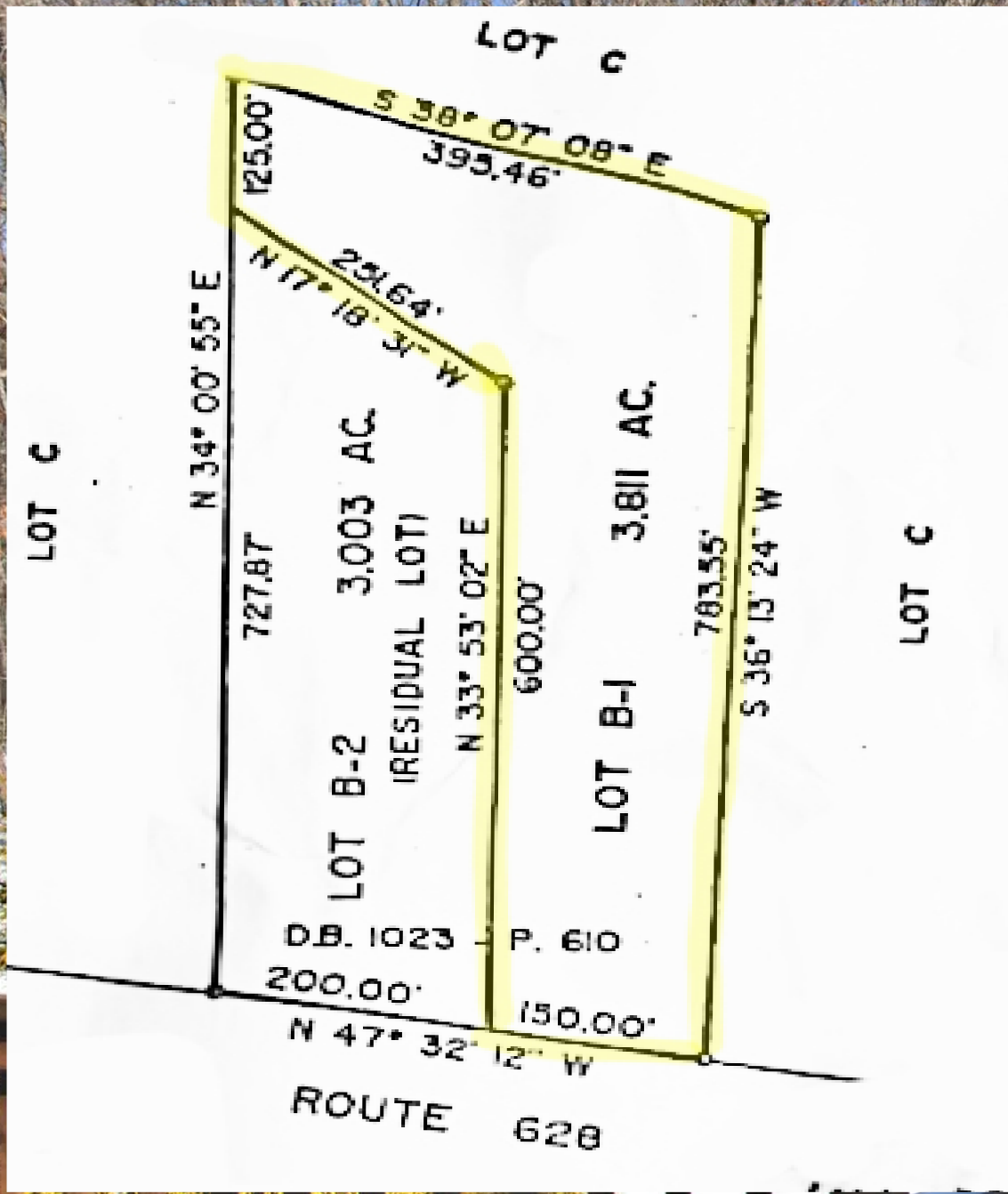
SQUARE FOOTAGE: 2,731

HEAT: Heat Pump

PROPANE: AmeriGas - 1000 Gallon Buried Propane Tank (owner owned)

CENTRAL AIR: Heat Pump







LISTING & SELLING

Farms | Historic | Equestrian

LISTING AGENTS

Bridget Archer 434-981-4149

Pam Dent 434-960-0161

VirginiaCountryLiving.com/hidden-creek


GAYLE HARVEY
REAL ESTATE, INC.

